


# TROUBLESHOOTING

## Control Module Audible Alerts

### One beep every one-second

Ignition Safety (Protection for Ignition system) 0  1

<b>Description of Fault</b>	Pilot is not successfully ignited within the trial period.
<b>Action</b>	The control will operate the step motor in the gas valve to the OFF position.
<b>How to Clear</b>	Cycle ON/OFF switch to OFF position.

---


### Two beeps every one-second

Recycle Safety: (Protection for Unstable Pilot) 0  1

<b>Description of Fault</b>	<ul style="list-style-type: none"><li>• Automatic Recycle - Pilot is proven and lost 3-times within 2-minutes without multiple ON/OFF commands.</li><li>• Automatic Recycle (VCS-ECOMODODS) - Pilot is established, then lost.</li><li>• Manual Recycle – Ignition sequence is initiated 6-times within 2-minutes.</li></ul>
<b>Action</b>	The control will operate the step motor in the gas valve to the OFF position.
<b>How to Clear</b>	<ul style="list-style-type: none"><li>• After 5-minutes has elapsed (5-minute internal timer expires), the module must see the mode/switch in the OFF position after that time.</li><li>• Once the module see's the mode/ switch in the OFF position after the 5-minutes has elapsed, it will stop beeping.</li><li>• Once the beeping has stopped, it will accept normal operation including another ON command from the user.</li></ul>

---


### 4 beeps every one-second (constant beeping)

Sensor Safety (Protection for Flame sensor) 0  1

<b>Description of Fault</b>	Pilot flame sensor voltage is too high (>flame false threshold) when ignition sequence is initiated.
<b>Action</b>	The control will operate the step motor in the gas valve to the OFF position.
<b>How to Clear</b>	Cycle the ON/OFF switch to the OFF position

---

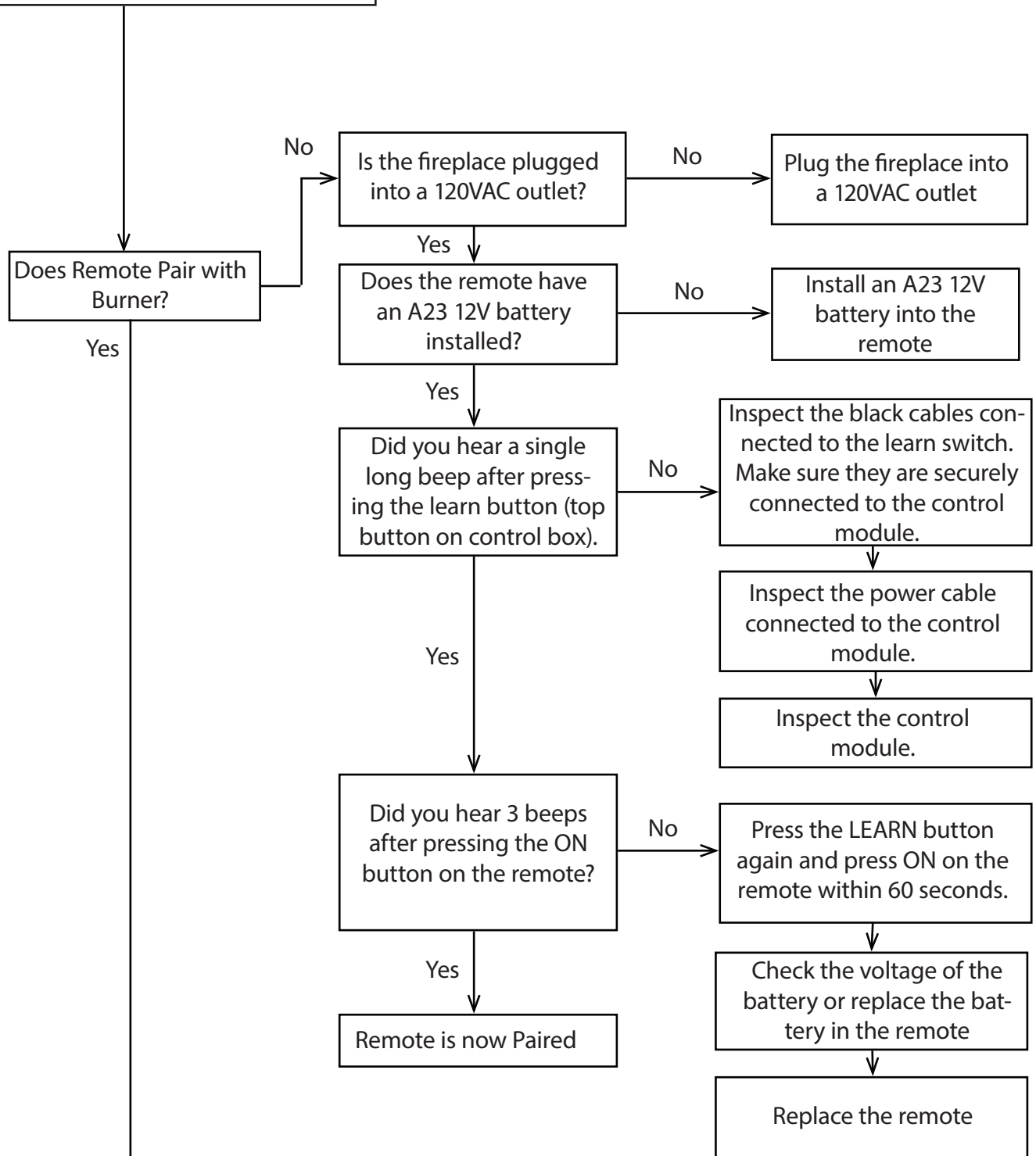
### 4 beeps every two-seconds

Thermal Safety (Overheat Protection) 0  2

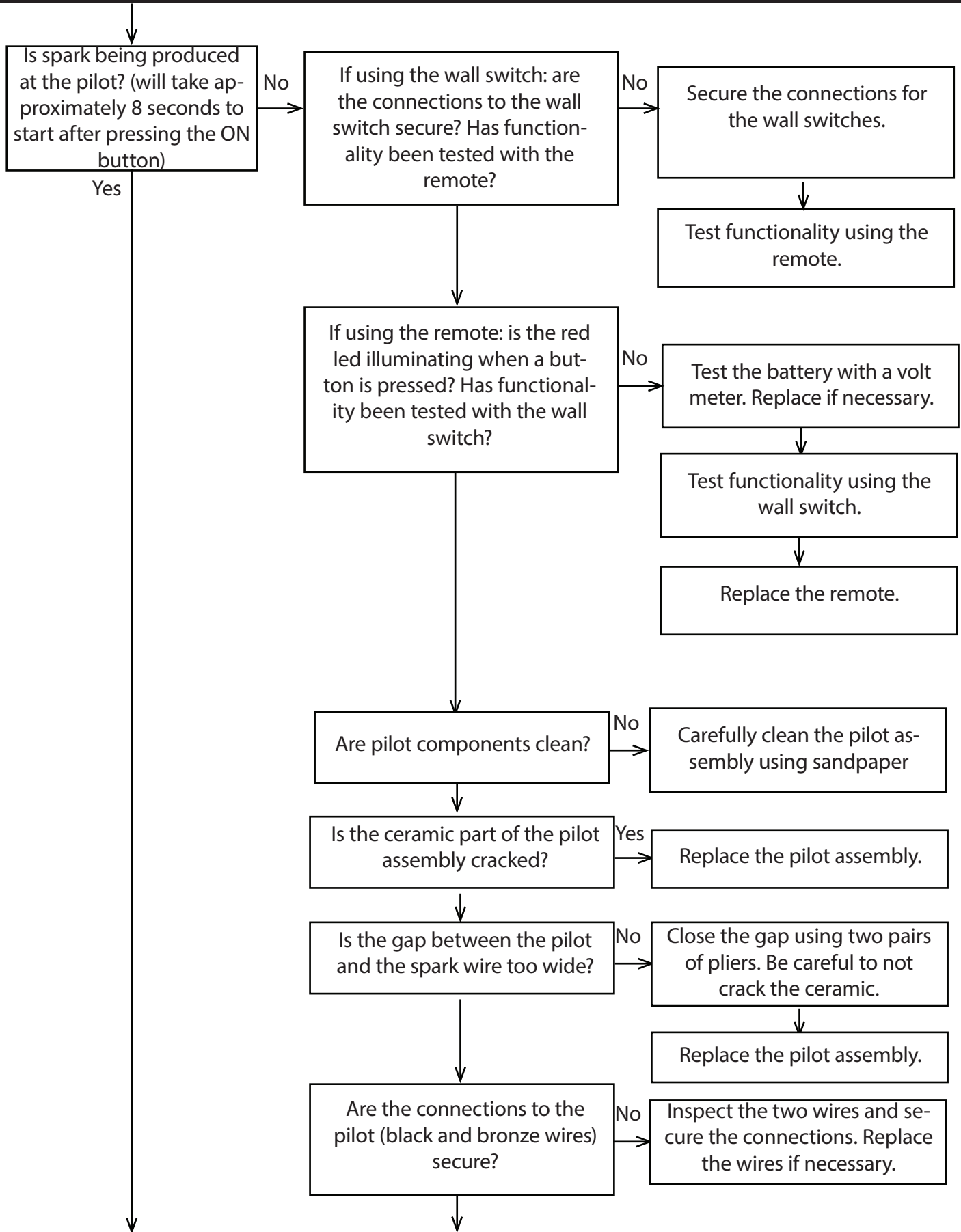
<b>Description of Fault</b>	Internal temperature has exceeded 170 deg. F.
<b>Action</b>	The module will operate the step motor in the gas valve to the OFF position.
<b>How to Clear</b>	Module's internal temperature must cool to below 160 deg. F and cycle the ON/OFF switch to the OFF position.

# TROUBLESHOOTING

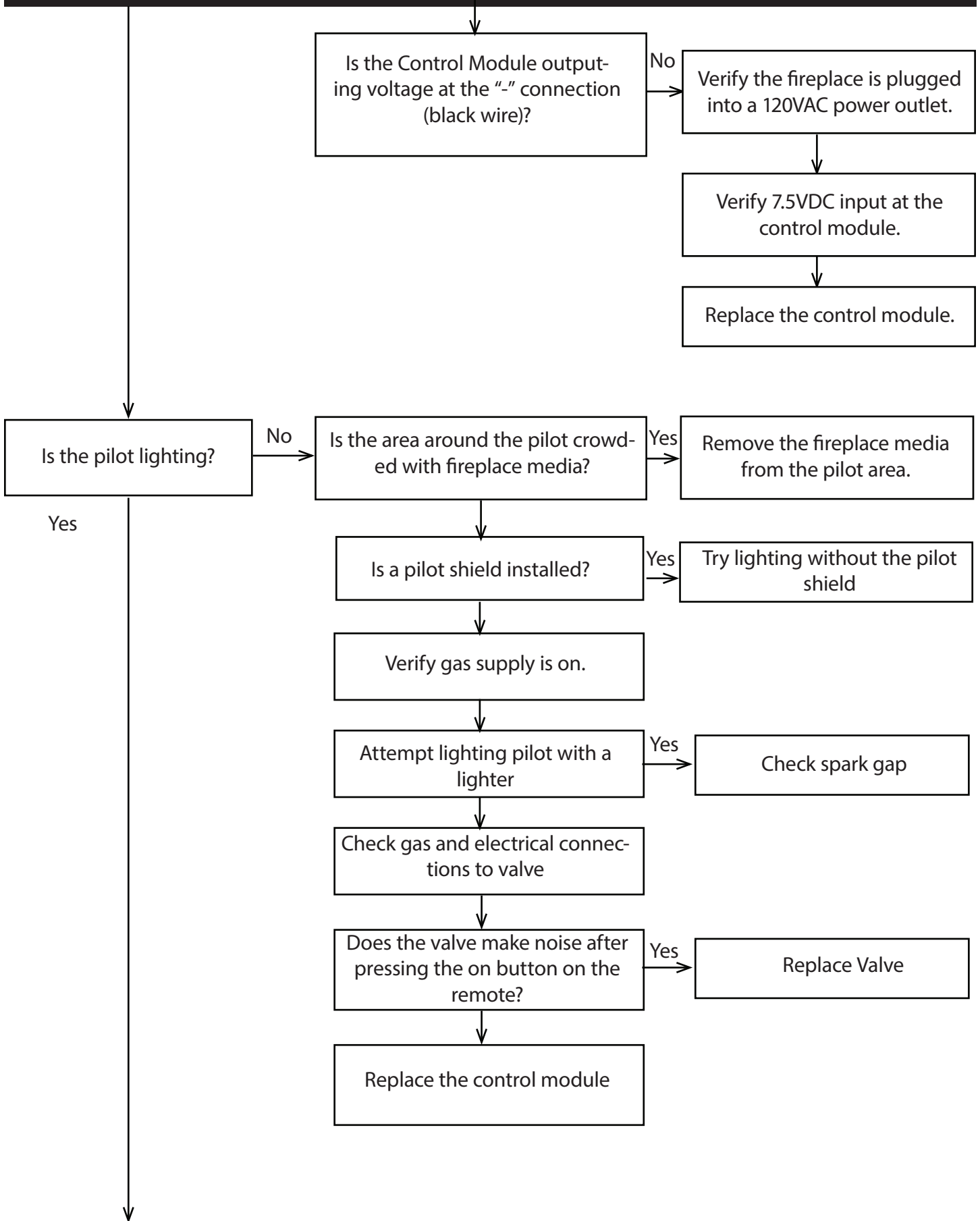
## Burner Troubleshooting



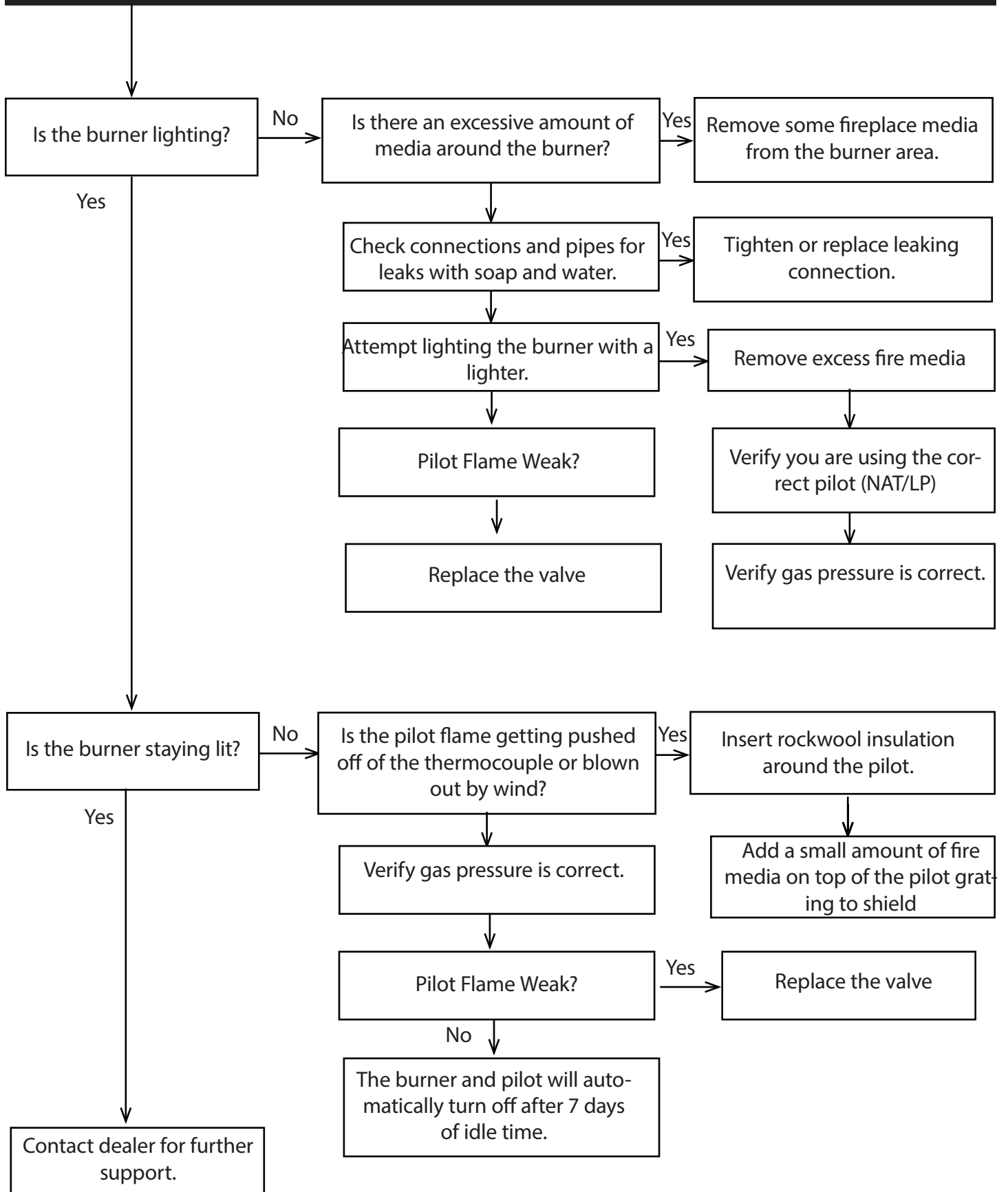
# TROUBLESHOOTING



# TROUBLESHOOTING

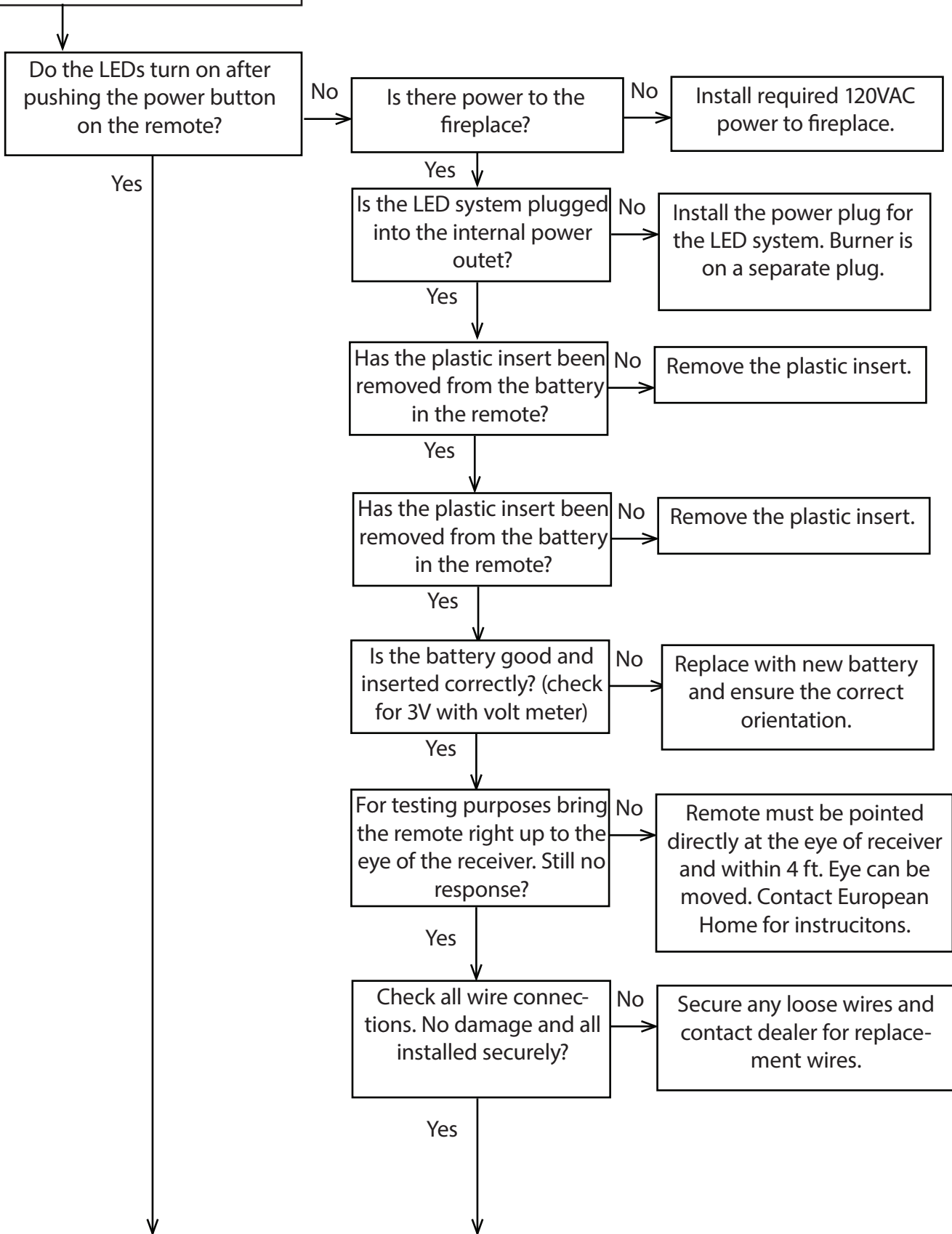


# TROUBLESHOOTING



# TROUBLESHOOTING

## LED Troubleshooting



# TROUBLESHOOTING

