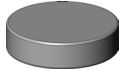
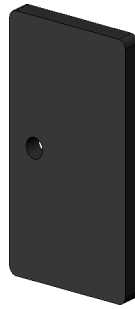


H SERIES OPTIONAL FIREPLACE SCREENS

Screen Kit Part#: HVF-SA-SS-HWK



Magnets: 16



Slip Tabs: 16

Note: some or all of the parts included in this kit will be used depending on the fireplace.

How to install

1) Position Slip Tabs between the front hearth panel and the inside bottom frame of the front of the fireplace unit using a magnet to secure. Space the Slip Tabs 6"(152mm) to 12"(305mm) apart starting with a Slip Tab on each end.



2) Slip Tabs will slide between the ceiling panel and the upper inside frame of the fireplace using a magnet to secure. Space the Slip Tabs 6"(152mm) to 12"(305mm) apart starting with a Slip Tab on each end.



3) The bottom of the screen will sit on the fireplace base and rest up against the tabs and the magnets. Push the top of the screen into place so that the top of the metal screen frame attaches to the ceiling magnets.

