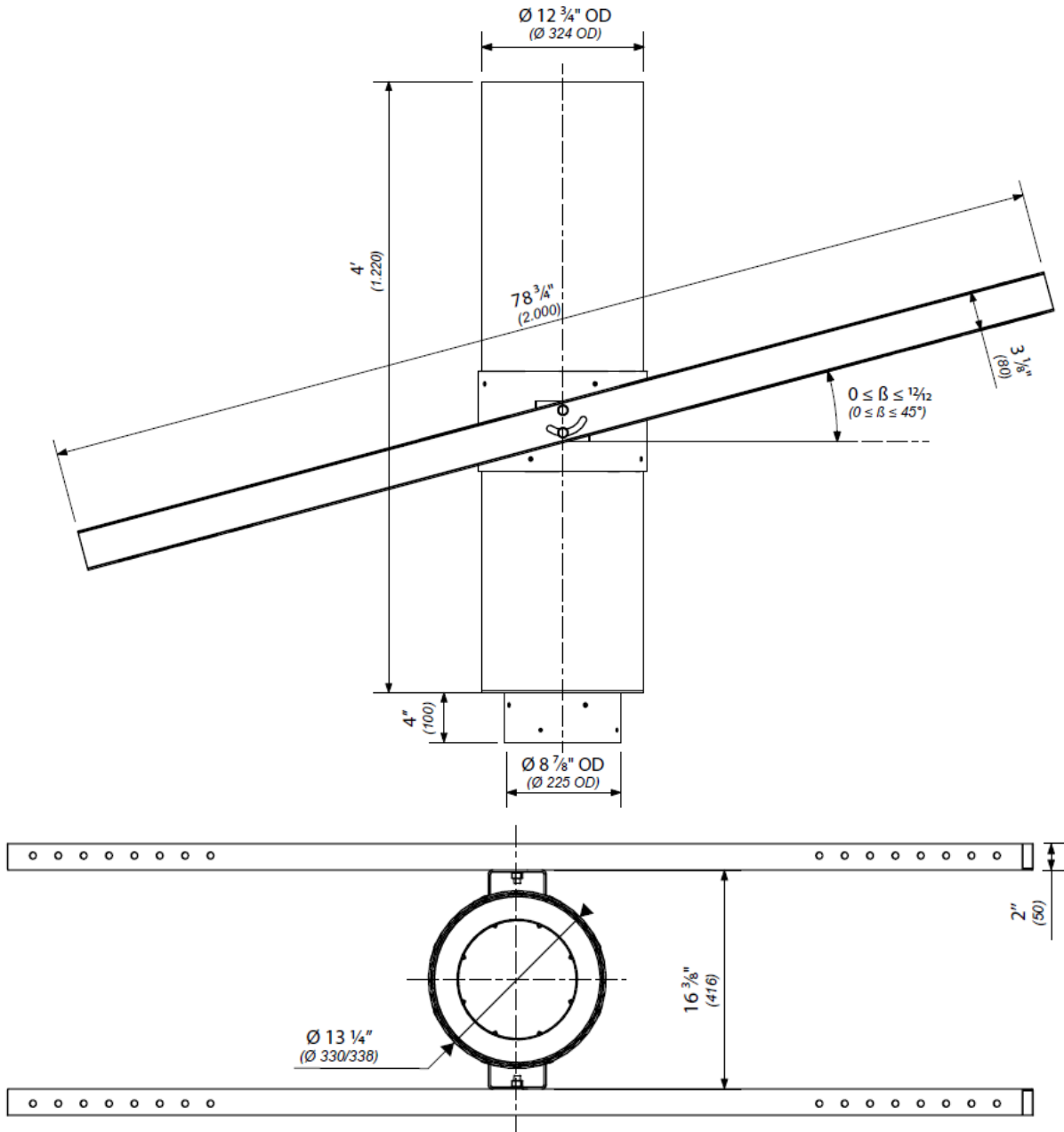




Focus Adjustable Suspension Plate Cutting and Installation Instructions





Focus Adjustable Suspension Plate Cutting and Installation Instructions

Summary:

The Focus adjustable suspension plate is designed to be used on rafters/structures with a pitch between zero and forty-five degrees.

8" inside diameter/10" outside diameter Class A insulated chimney flue sits inside the 12" wide portion of the drum. Keeping a 2" overall air gap between the Class A insulated chimney flue and the 12" wide portion of the drum prevents the transfer of heat to surrounding building materials.

The wide portion of the drum must enter the room by a minimum of 3" for safe installation.

The bottom portion of the drum is 8" wide to accept the Focus single wall interior flue.

The adjustable suspension plate is for use with Gyrofocus, Ergofocus, Filiofocus Central 1600, Bathyscafocus, Meijifocus and Agorafocus 630 models only.

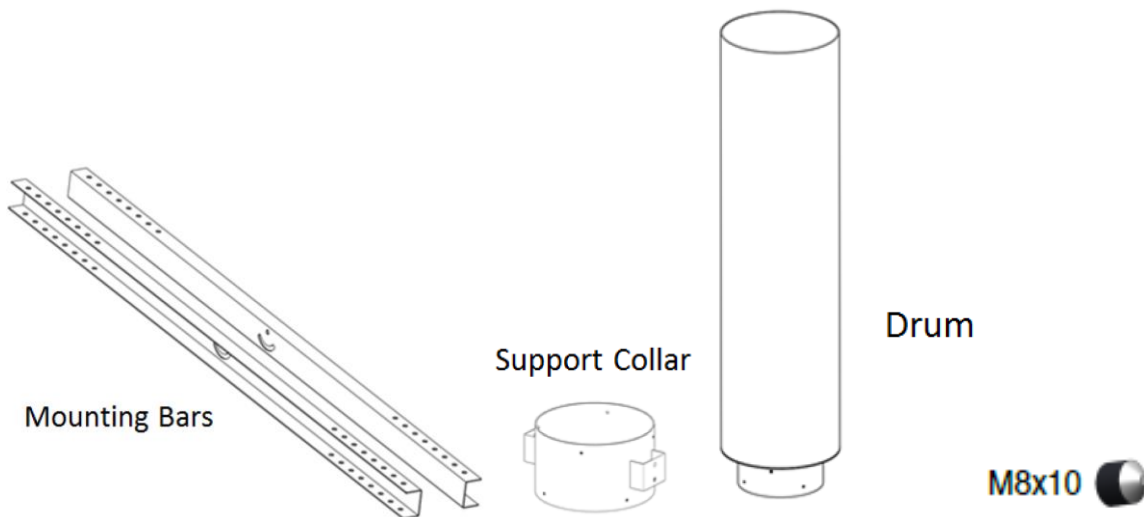
The adjustable suspension plate consists of:

- (2) mounting bars
- (1) support collar
- (1) drum
- (8) M8 x 10 cramping screws

The drum is designed to be field cut as needed.

The mounting bars may be cut to length and must be attached securely to the rafter/structure using lag bolts (wood installation) or through bolts (wood or metal installation) to support the weight of the fireplace and flue.

Components:





Focus Adjustable Suspension Plate Cutting and Installation Instructions

The steps of installation and cutting of the adjustable suspension plate are as follows:

- 1 - Place support collar between the mounting bars. Tighten bolts using supplied nuts and lock washers.
- 2 - Mount this assembly in the ceiling or roof.
3. Install the drum inside the support collar from below.
4. Adjust drum to desired length. The large portion of the drum must be a minimum 3" below ceiling finish.
5. If drum is to be cut, mark the drum above the support collar with a pencil using the support collar as a guide.
6. Remove the drum from the support collar and apply tape around pencil marks. Use as cutting guide.
7. Cut the drum with an angle grinder outfitted with cutting wheel following the tape.
8. Install the drum again into the support collar. Using a level, confirm and tighten firmly cramping screws following the pattern below.

Screw 1 – Install first x 3

Screw 2 – Install next x 2

Screw 3 – Install last x 3

Note: Screws are not designed to sit flush with support collar.

