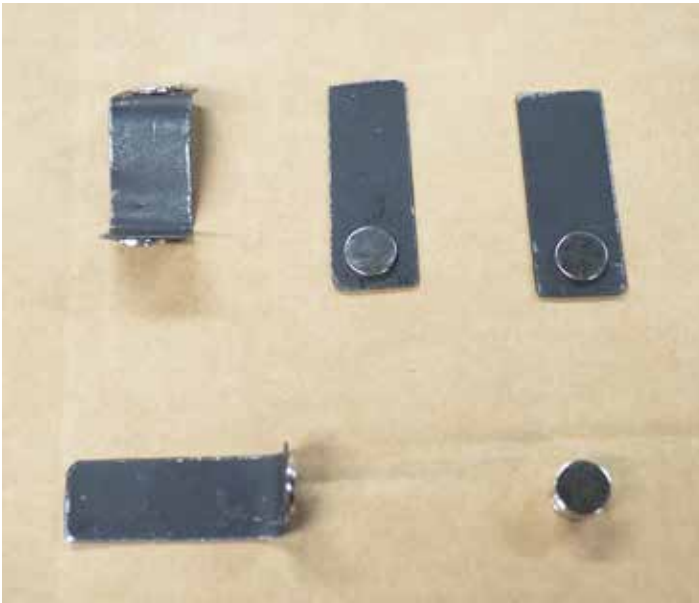


## **Installing the Screens Installation Guide**

Model:  
240

# SCREEN INSTALLATION



- Parts included:
- (2) Flat metal tabs
  - (1) "L" Shaped metal tab
  - (1) "S" Shaped metal tab
  - (12) Magnets

*Figure 3*

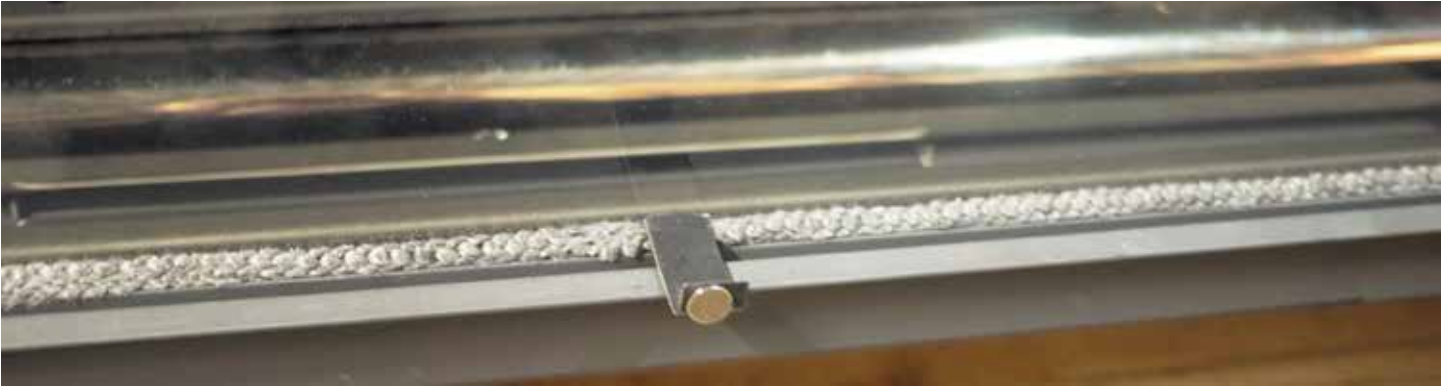


*Figure 1* Place single magnet on bottom return flange 12" from the left end corner, right end corner, and the center.



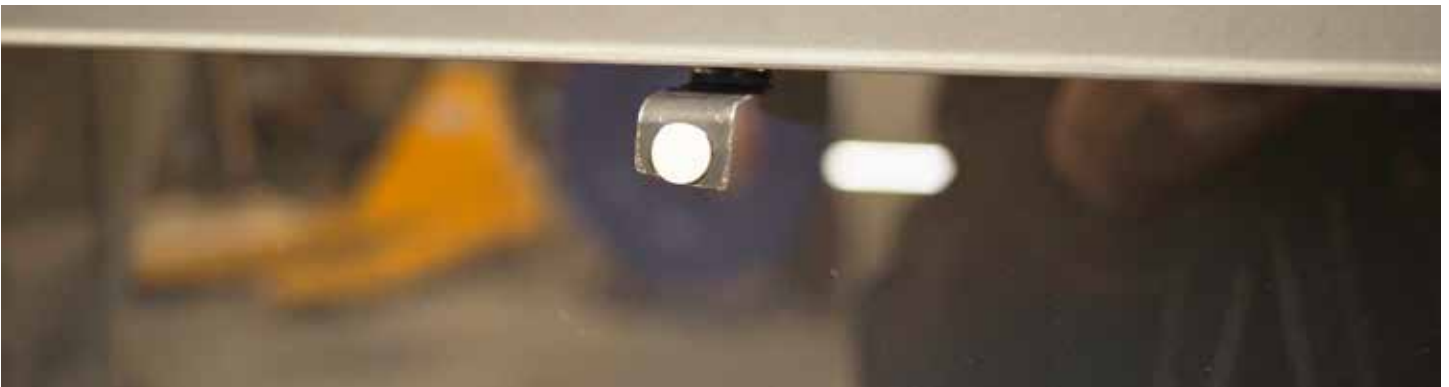
*Figure 2* Place flat metal tab on magnet and push against glass on both left and right sides (not center).

# SCREEN INSTALLATION

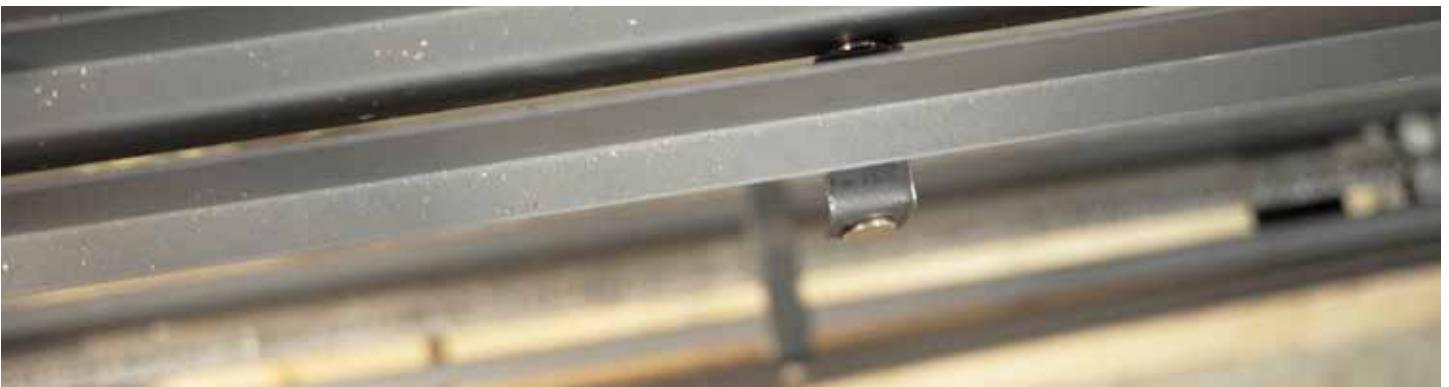


**Figure 6** Place "L" shaped metal tab on center magnet with the short end facing up and out. Place magnet on short end face.

Using the "S" shaped metal tab, place a magnet on both face ends. Position metal tab at the top center of the fireplace. Slide tab up to the top of the trim so that one end of the tab sticks to the fireplace cabinet, not the outer frame (see below).



**Figure 4** *Straight View*  
(Straight view of top, center, tab.)



**Figure 5** *Overhead View*  
(Overhead view of top, center, tab.)

# SCREEN INSTALLATION

When the bottom trim put into place the 3 metal tabs will be exposed (see below).



*Figure 7*



*Figure 8*

# SCREEN INSTALLATION

Place 3 magnets on both left and right trims (top, center, bottom) and attach trims to fireplace.



**Figure 9** Without side trim



**Figure 10** With side trim plus magnets

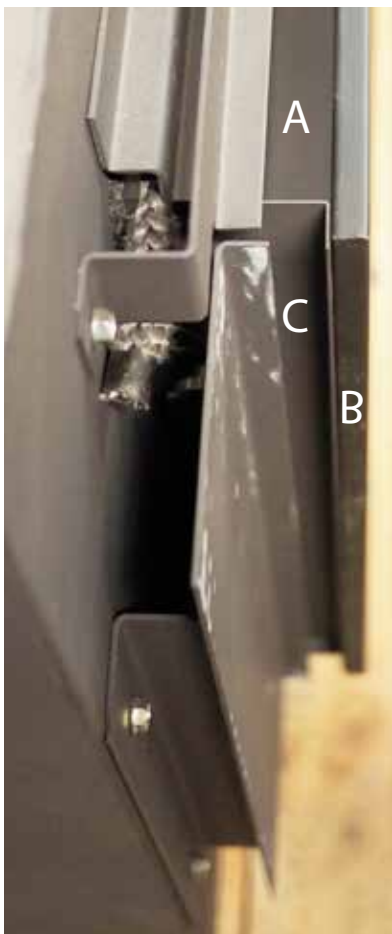


**Figure 11** Rest the bottom of the screen on the 3 tabs that are under the trim. Push the screen into position so that the exposed magnets come in contact with the screen frame.

# SCREEN INSTALLATION



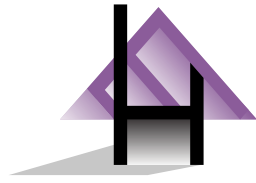
**Figure 12** Screen in Position



**Figure 13** Top View with Screen Attached

A	Open
B	Screen Frame Edge
C	Side Trim

# SCREEN INSTALLATION



EuropeanHome

**EUROPEAN HOME**

a division of Europa Ja, Inc.

376 Washington Street

Suite 203

Malden, MA 02148

[www.europeanhome.com](http://www.europeanhome.com)